



**CARAVEL**

BPM Technology Solutions

# Harnessing the Power of your Analytics with NSAW

Customer Success Webinar Series



# Caravel Team Introductions



## Ashish Tamboli | EPM Senior Consultant

Ashish is a Data Analytics Enthusiast helping clients leverage the power of cloud data and reporting solutions. With over 13 years of experience in implementing analytics , Data Warehousing and ETL solutions Ashish has developed strong experience in Oracle Cloud platform , NetSuite Analytics Warehouse, Tableau, PowerBI like tools and platforms.

He stays in Toronto , Canada. Loves to play Badminton and Cricket and is a big fan of Indian Cricket team.



## Tai Valenzuela | Director, Advisory

Over the last 20 years, I have established and optimized brand strategies, harnessed the power of digital platforms, and led cross-functional teams towards generating substantial revenue growth.



## Meagan Hove | Director, Client Engagement

As Caravel's dedicated client engagement lead, Meagan has spent the last 10 years working on strengthening relationships between companies and their clients.





## AGENDA

**1** About Caravel

---

**2** NSAW

---

**3** Demo

---

**4** Q&A

---



# About **Caravel**



# About Caravel



**750+**

**NETSUITE  
IMPLEMENTATIONS**

**9+**

**VERTICAL  
SPECIALTIES**

**50+**

**IP SOLUTION  
BUNDLES**

**1200+**

**GLOBAL  
EMPLOYEES**

**1500+**

**CONSULTING  
PROJECTS**

**150+**

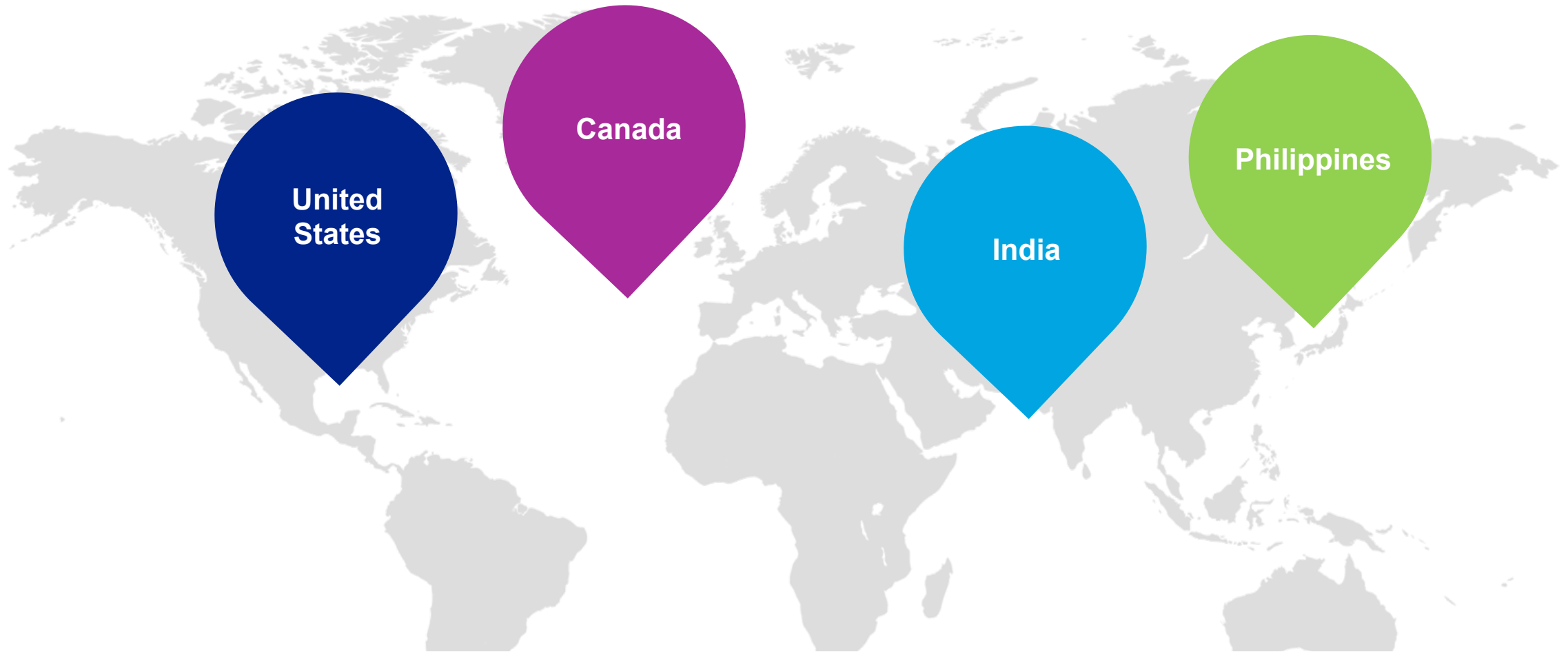
**MANAGED  
SERVICES CLIENTS**

**4**

**GLOBAL  
DEPLOYMENT  
CENTERS**



# FOUR Global Delivery Centers



# Services

**ADVISE**



**DEPLOY**



**SUPPORT**



**EXTEND**





# NetSuite Analytics Warehouse



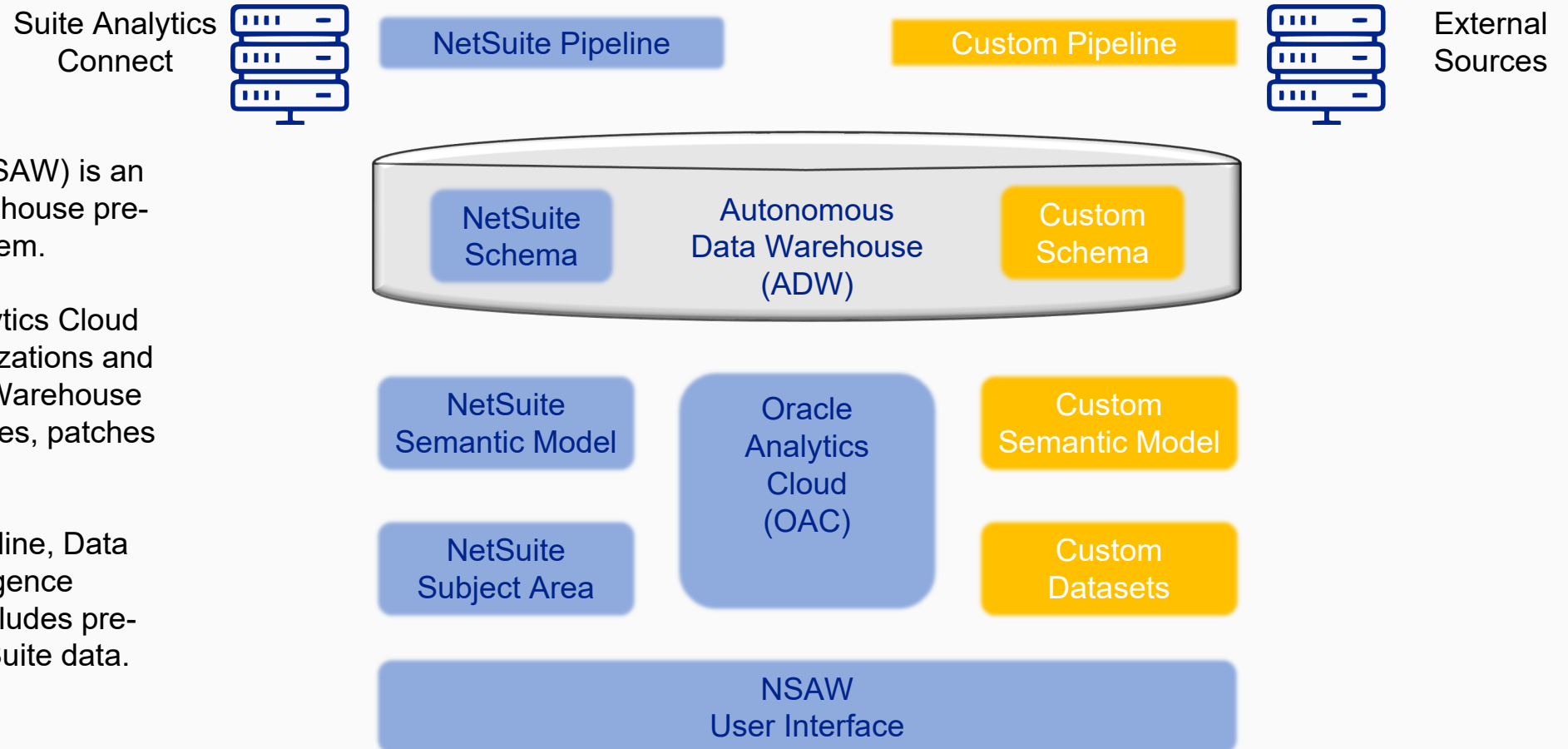


# NSAW | What is NSAW

NetSuite Analytics Warehouse (NSAW) is an analytics platform and a data warehouse pre-built for Oracle NetSuite ERP system.

NSAW leverages the Oracle Analytics Cloud (OAC), a platform to create visualizations and analytics, and Autonomous Data Warehouse (ADW), a data warehouse that tunes, patches and scales itself.

NSAW combines a Managed Pipeline, Data Warehouse and a Business Intelligence component into one solution. It includes pre-build analytical content using NetSuite data.



# NSAW | Components

## Autonomous Data Warehouse (ADW)



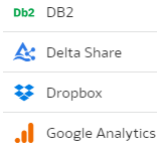
- Query ADW data directly through SQLDeveloper
- Ability to add schemas, stored procures, tables, views etc.
- Store and manage pre-NetSuite legacy data & external data

## Pre-Configured Content



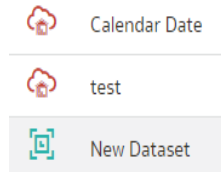
- Get started with pre-built workbooks
- Ready to use Semantic Model Subject Areas
- Extendable model – for NetSuite customizations

## OAC Connections



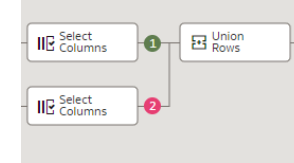
- Connect to sources with more than 40 connectors
- Create multi-source datasets using the available connections

## Datasets



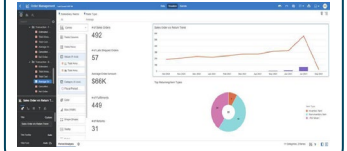
- Self-service data models
- Transform & enrich data
- Drag & drop or manual SQL
- Join data from various sources

## Data Flows



- Combine T-Types or external data
- Aggregate data
- Suitable for small (<2M) datasets
- Import small file extracts into ADW

## NSAW Workbooks





- Blend & Visualize
- Reduce reliance on Excel
- Secure/share/ collaborate
- Import DV Extensions (plug-ins)





# NSAW | Connectivity


External Data Sources


  
CSV

  
XLSX









NetSuite Functional Areas

Inventory

Bank

Purchases & Payables

Manufacturing

Employee Expenses

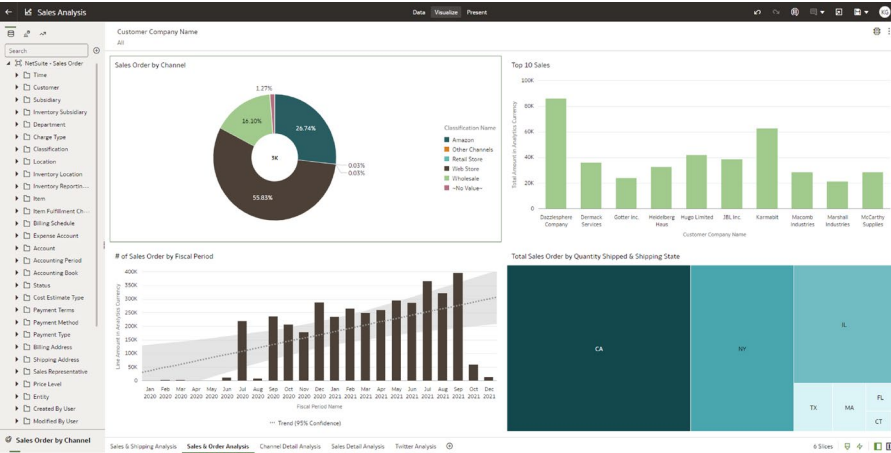
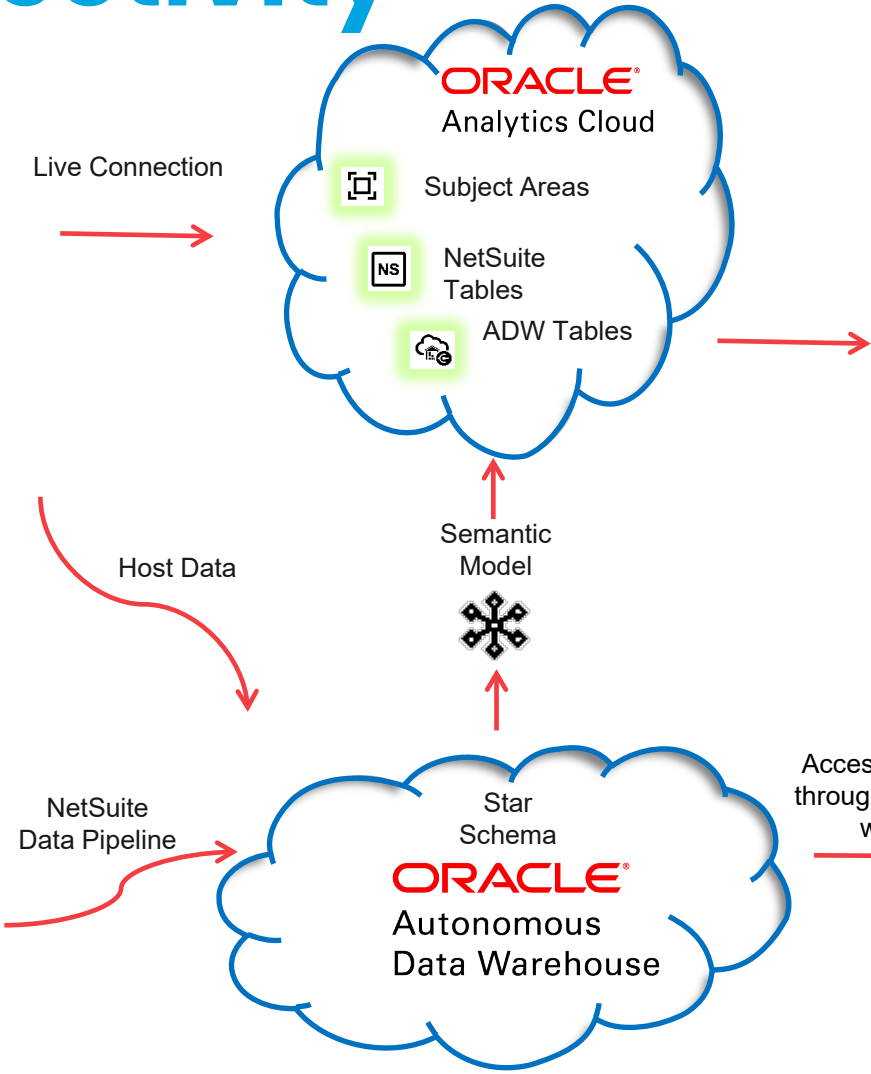
Sales

Inventory Snapshot

Financials

Payroll

Sales Snapshot



  
SQLDeveloper

  
ODI





# NSAW | Value

## Immediate Insights & Complete View of Company Performance

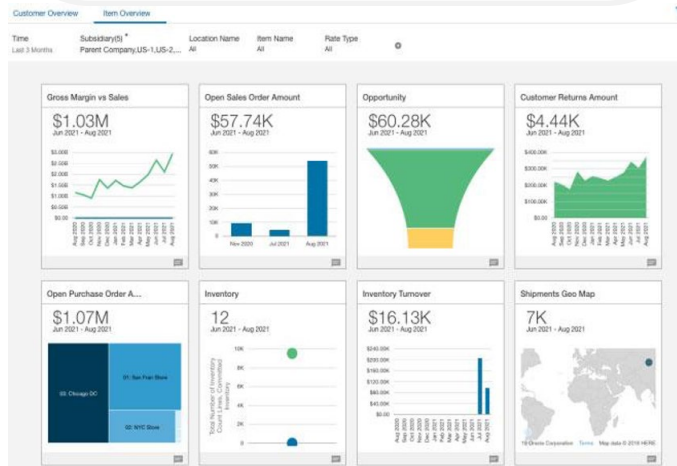
Realize quicker time to value with NSAW data pipelines and data from multiple sources to improve decision making and align teams across the organization.

## Personalized Insights and Accurate Answers

Get data you need on Role-Based views, faster and accurate answers to your business

NSAW as single source of truth

- Multiple Data Sources
- Historical Data Analysis
- Enhanced Consolidated Reports
- Reduce Manual Efforts
- Self Serve Analytics





# NSAW | Target Users

## External Data

Customers planning to analyze their NetSuite data with non-NetSuite data



## Rich Visualizations & Performance

Customers who need better visualization options than saved Searches and basic reports



## Business Intelligence

Customers looking for a cost-effective enterprise class BI tool for self serve analytics



THE FORRESTER WAVE™  
Data Management For Analytics  
Q1 2023

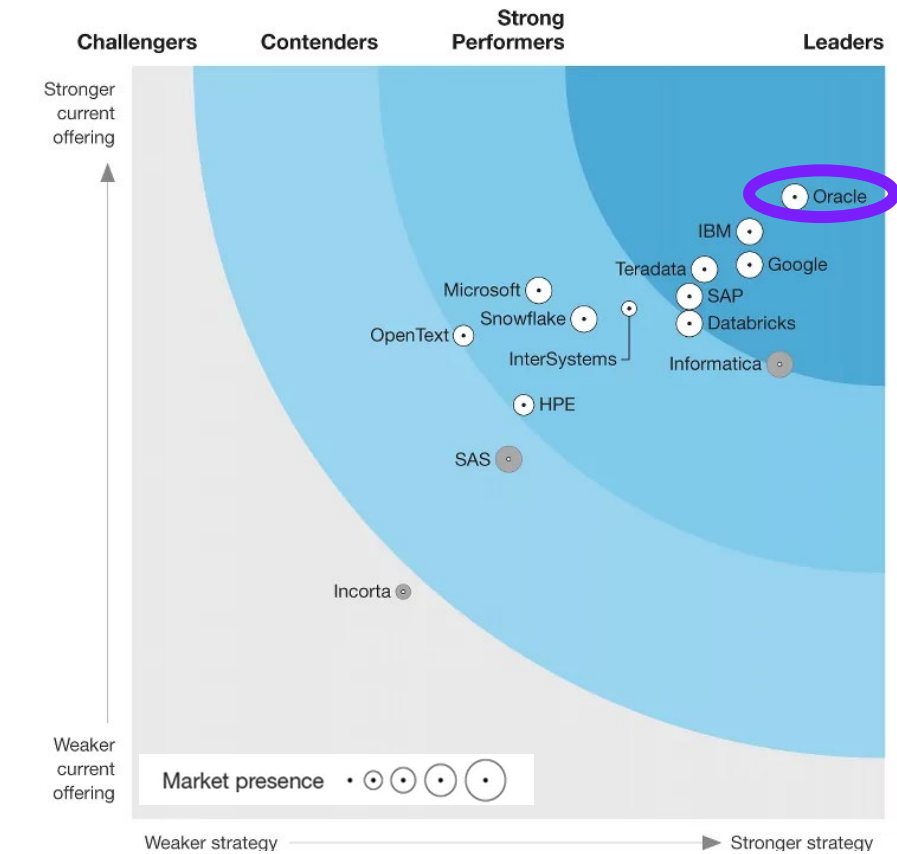
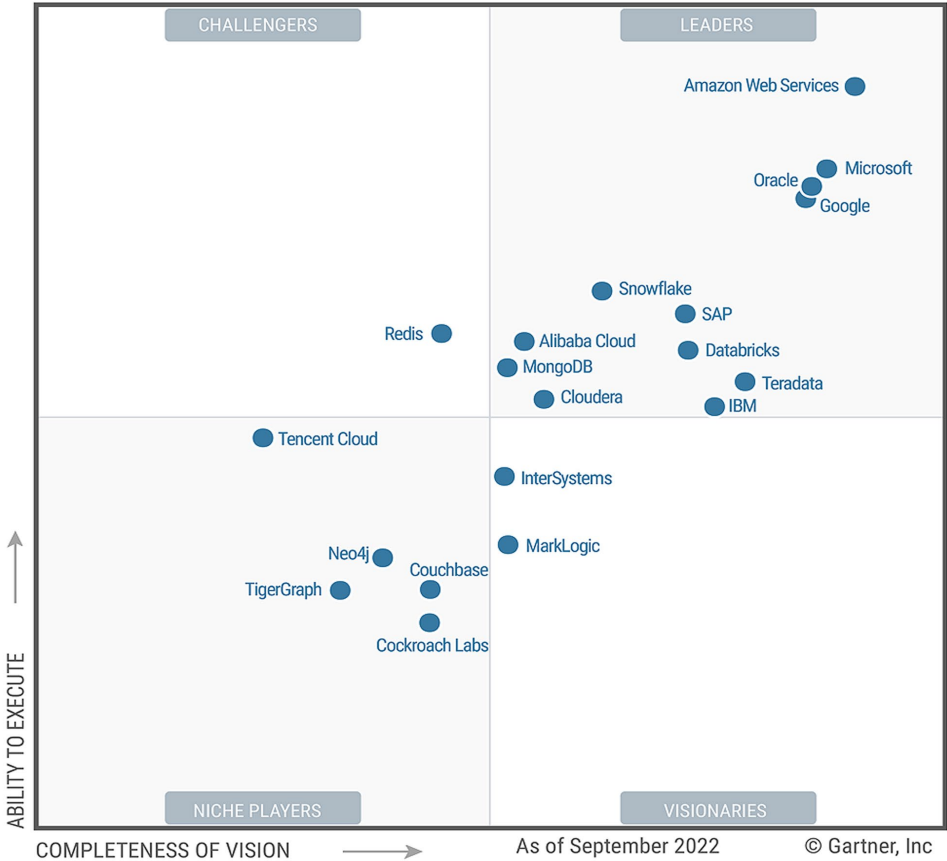


Figure 1: Magic Quadrant for Cloud Database Management Systems



# Demo



# Questions & Wrap-Up





# Upcoming Webinars | Caravel Contacts



03/29/24



DCAA Compliance

04/19/24

BPM Cybersecurity

05/10/24

SaaS Metrics

## Caravel Contacts



Tai Valenzuela, Director, BPM Advisory  
[tvalenzuela@bpm.com](mailto:tvalenzuela@bpm.com)

Meagan Hove, Director, Client Engagement  
[mhove@bpm.com](mailto:mhove@bpm.com)



# THANK YOU!

